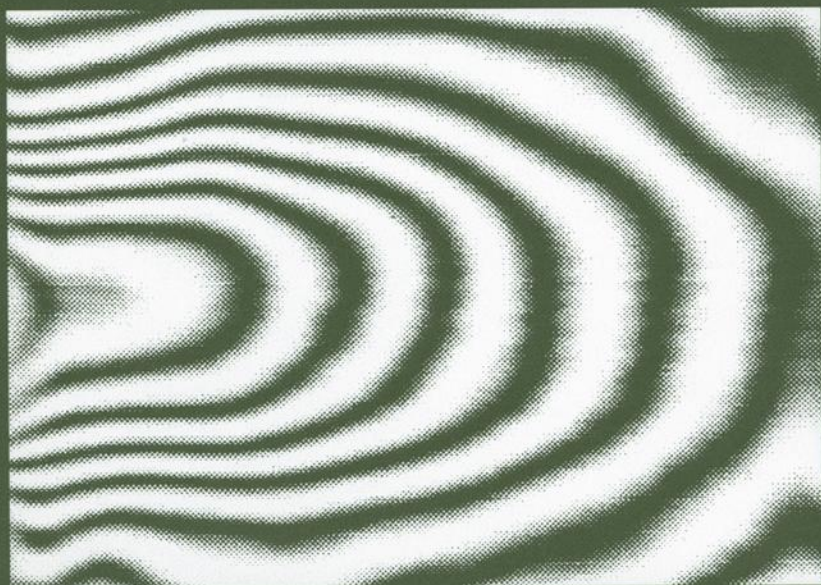


Fracture Mechanics

Twenty-Third Symposium



Ravinder Chona, editor



STP 1189

STP 1189

Fracture Mechanics: Twenty-Third Symposium

Ravinder Chona, editor

ASTM Publication Code Number (PCN)
04-011890-30



ASTM
1916 Race Street
Philadelphia, PA 19103

ASTM Publication Code Number (PCN) 04-011890-30
ISBN: 0-8031-1867-8
ISSN: 1040-3094

Copyright © 1993 AMERICAN SOCIETY FOR TESTING AND MATERIALS, Philadelphia, PA. All rights reserved. This material may not be reproduced or copied, in whole or in part, in any printed, mechanical, electronic, film, or other distribution and storage media, without the written consent of the publisher.

Photocopy Rights

Authorization to photocopy items for internal or personal use, or the internal or personal use of specific clients, is granted by the AMERICAN SOCIETY FOR TESTING AND MATERIALS for users registered with the Copyright Clearance Center (CCC) Transactional Reporting Service, provided that the base fee of \$2.50 per copy, plus \$0.50 per page is paid directly to CCC, 27 Congress St., Salem, MA 01970; (508) 744-3350. For those organizations that have been granted a photocopy license by CCC, a separate system of payment has been arranged. The fee code for users of the Transactional Reporting Service is 0-8031-1867-8/93 \$2.50 + .50.

Peer Review Policy

Each paper published in this volume was evaluated by three peer reviewers. The authors addressed all of the reviewers' comments to the satisfaction of both the technical editor(s) and the ASTM Committee on Publications.

The quality of the papers in this publication reflects not only the obvious efforts of the authors and the technical editor(s), but also the work of these peer reviewers. The ASTM Committee on Publications acknowledges with appreciation their dedication and contribution to time and effort on behalf of ASTM.

Printed in Baltimore, MD
September 1993

Foreword

The Twenty-Third National Symposium on Fracture Mechanics was held on 18–20 June 1991 in College Station, Texas. ASTM Committee E24 on Fracture Testing was the sponsor. Ravinder Chona, Texas A&M University, presided as symposium chairman and is the editor of this publication.

Contents

| | |
|--|------------|
| Overview | 1 |
| JERRY L. SWEDLOW MEMORIAL LECTURE | |
| Structural Problems in Search of Fracture Mechanics Solutions—J. M. BARSOM | 5 |
| ELASTIC-PLASTIC FRACTURE MECHANICS—ANALYSES AND CONSTRAINT ISSUES | |
| Crack Initiation Under Generalized Plane-Strain Conditions—D. K. M. SHUM AND J. G. MERKLE | 37 |
| Experimental Relationship Between Equivalent Plastic Strain and Constraint for Crack Initiation—W. G. REUTER, W. R. LLOYD, R. L. WILLIAMSON, J. A. SMITH, AND J. S. EPSTEIN | 55 |
| A Comparison of Weibull and β_{1c} Analyses of Transition Range Data— D. E. MCCABE | 80 |
| Near-Crack-Tip Transverse Strain Effects Estimated with a Large Strain Hollow Cylinder Analogy—J. G. MERKLE | 95 |
| The Conditions at Ductile Fracture in Tension Tests—R. J. DEXTER AND S. ROY | 115 |
| Developing <i>J-R</i> Curves Without Displacement Measurement Using Normalization—K. LEE AND J. D. LANDES | 133 |
| Evaluation of Dynamic Fracture Toughness Using the Normalization Method— R. HERRERA, G. CARCAGNO, AND L. A. DE VEDIA | 168 |
| Asymptotic Analysis of Steady-State Crack Extension of Combined Modes I and III in Elastic-Plastic Materials with Linear Hardening—H. YUAN AND A. CORNEC | 185 |
| An Asymptotic Analysis of Static and Dynamic Crack Extension Along a Ductile Bimaterial Interface/Anti-Plane Case—H. YUAN AND K.-H. SCHWALBE | 208 |

ELASTIC-PLASTIC FRACTURE MECHANICS—APPLICATIONS

- An Application Methodology for Ductile Fracture Mechanics—J. D. LANDES,
Z. ZHOU, AND K. H. BROWN** 229
- Growth of Surface Cracks During Large Elastic-Plastic Loading Cycles—
R. C. McCLUNG, S. J. HUDAK, JR., M. L. BARTLETT, AND J. H. FITZGERALD** 265
- Level-3 Crack-Tip Opening Displacement (CTOD) Assessment of Welded Wide
Plates in Bending—Effect of Overmarching Weld Metal—S. BERGE,
O. I. EIDE, AND M. FUJIKUBO** 284
- Limit Pressure Analysis of a Cylindrical Vessel with Longitudinal Crack—
X. CHEN, P. ALBRECHT, AND J. JOYCE** 310
- A Deep Part-Through All-Around Circumferential Crack in a Cylindrical Vessel
Subject to Combined Thermal and Pressure Load—L. CHEN, P. C. PARIS,
AND H. TADA** 330
- Study of a Crack-Tip Region Under Small-Scale Yielding Conditions—
C. A. SCIAMMARELLA, A. ALBERTAZZI, JR., AND J. MOURIKES** 344
- Fracture Properties of Specially Heat-Treated ASTM A508 Class 2 Pressure
Vessel Steel—D. J. ALEXANDER AND R. D. CHEVERTON** 365

LINEAR-ELASTIC FRACTURE MECHANICS—ANALYSES

- Cracked Strip Problem Subjected to a Nonsymmetric Transverse Loading by a
Stamp—O. S. YAHŞI AND Y. DEMIR** 383
- Stress Intensity Factor Solutions for Partial Elliptical Surface Cracks in
Cylindrical Shafts—K.-L. CHEN, A.-Y. KUO, AND S. SHVARTS** 396
- Analysis of Circumferential Cracks in Circular Cylinders Using the Weight-
Function Method—S. R. METTU AND R. G. FORMAN** 417

LINEAR-ELASTIC FRACTURE MECHANICS—APPLICATIONS

- Environmentally Controlled Fracture of an Overstrained A723 Steel Thick-Wall
Cylinder—J. H. UNDERWOOD, V. J. OLMSTEAD, J. C. ASKEW, A. A. KAPUSTA,
AND G. A. YOUNG** 443
- Fatigue Lifetimes for Pressurized, Eroded, Cracked, Autofrettaged Thick
Cylinders—A. P. PARKER, R. C. A. PLANT, AND A. A. BECKER** 461
- An Evaluation of Fracture Mechanics Properties of Various Aerospace
Materials—J. A. HENKENER, V. B. LAWRENCE, AND R. G. FORMAN** 474

| | |
|---|-----|
| Leak-Before-Break and Fatigue Crack Growth Analysis of All-Steel On-Board Natural Gas Cylinders—G. S. BHUYAN | 498 |
|---|-----|

FATIGUE AND NONDESTRUCTIVE EVALUATION

| | |
|---|-----|
| Intergranular Delamination and the Role of Artificial Aging Conditions on the Fracture of an Unrecrystallized Aluminum-Lithium-Zirconium (Al-Li-Zr) Alloy—P. C. MCKEIGHAN, B. M. HILLBERRY, AND T. H. SANDERS, JR. | 515 |
| Development of Fatigue Life Prediction Program for Multiple Surface Cracks—Y.-J. KIM, Y.-S. CHOY, AND J.-H. LEE | 536 |
| Fatigue Crack Growth Behavior of Titanium Aluminide Ti-25Al-25Nb—S. J. BALSONE, D. C. MAXWELL, AND T. F. BRODERICK | 551 |
| Fatigue Crack Growth Rate Measurements in Aluminum Alloy Forgings: Effects of Residual Stress and Grain Flow—R. W. BUSH, R. J. BUCCI, P. E. MAGNUSEN, AND G. W. KUHLMAN | 568 |
| Fatigue Crack Growth Analysis of Structures Exposed to Fluids with Oscillating Temperature Distributions—S. CHATTOPADHYAY | 590 |
| Development of a Fatigue Crack Growth Rate Specimen Suitable for a Multiple Specimen Test Configuration—F. R. DESHAYES AND W. H. HARTT | 598 |
| Ultrasonic Characterization of Fatigue Crack Closure—R. B. THOMPSON, O. BUCK, AND D. K. REHBEIN | 619 |

COMPOSITES AND NONMETALS

| | |
|---|-----|
| Debonding Force of a Single Fiber from a Composite Body—S.-S. LEU AND J. L. HILL | 635 |
| A Finite-Element Analysis of Nonlinear Behavior of the End-Loaded Split Laminate Specimen—C. R. CORLETO AND H. A. HOGAN | 649 |
| Investigating the Near-Tip Fracture Behavior and Damage Characteristics in a Particulate Composite Material—C.-T. LIU | 668 |
| Modeling the Progressive Failure of Laminated Composites with Continuum Damage Mechanics—D. C. LO, D. H. ALLEN, AND C. E. HARRIS | 680 |
| Effect of Fiber-Matrix Debonding on Notched Strength of Titanium Metal-Matrix Composites—C. A. BIGELOW AND W. S. JOHNSON | 696 |
| Evolution of Notch-Tip Damage in Metal-Matrix Composites During Static Loading—J. G. BAKUCKAS, JR., J. AWERBUCH, T.-M. TAN, AND A. C. W. LAU | 713 |

| | |
|---|-----|
| Experimental Verification of a New Two-Parameter Fracture Model— D. E. RICHARDSON AND J. G. GOREE | 738 |
| Translaminar Fracture of Notched Graphite/Epoxy Laminates— C. E. HARRIS AND D. H. MORRIS | 751 |
| Near-Tip Behavior of Particulate Composite Material Containing Cracks at Ambient and Elevated Temperatures— C. W. SMITH, L. WANG, H. MOUILLE, AND C.-T. LIU | 775 |
| Static Fatigue in Dilatant-Zone-Toughened Ceramics— K. DUAN, B. COTTERELL, AND Y.-W. MAI | 788 |
| Fracture Energy Dissipation Mechanism of Concrete— Z. GUO, J.-H. YON, N. M. HAWKINS, AND A. S. KOBAYASHI | 797 |

PROBABILISTIC AND DYNAMIC ISSUES

| | |
|---|-----|
| Probabilistic Fracture Mechanics Evaluation of Local Brittle Zones in HSLA-80 Steel Weldments— L. E. EISELSTEIN, D. O. HARRIS, T. M. SCOONOVER, AND C. A. RAU | 809 |
| Rapid Crack Propagation in Polyethylene Pipes: The Role of Charpy and Dynamic Fracture Testing— P. S. LEEVERS, P. YAYLA, AND M. A. WHEEL | 826 |
| Effects of Sample Size and Loading Rate on the Transition Behavior of a Ductile Iron (DI) Alloy— R. SALZBRENNER AND T. B. CRENSHAW | 840 |
| Author Index | 859 |
| Subject Index | 861 |

ISBN 0-8031-1867-8