

Selected Technical Papers

STP 1568

# Mechanical Properties of Frozen Soils

In cooperation with:



*Editors:*  
Hannele Zubeck  
Zhaohui Yang

# Selected Technical Papers STP1568

## **Mechanical Properties of Frozen Soils**

*Editors:*

Hannele Zubeck

Zhaohui Yang



ASTM International  
100 Barr Harbor Drive  
PO Box C700  
West Conshohocken, PA 19438-2959

Printed in the U.S.A.

ASTM Stock #: STP1568

### **Library of Congress Cataloging-in-Publication Data**

Mechanical properties of frozen soils / editors, Hannele Zubeck, Zhaohui Yang.

pages cm. -- (STP ; 1568)

"Standards worldwide."

"ASTM stock #: STP1568."

"Contains peer-reviewed papers that were presented at a symposium held January 31, 2013 in Jacksonville, FL; the symposium was sponsored by ASTM International Committee D18 on Soil and Rock and Subcommittee D18.19 on Frozen Soils and Rock"--Title page verso.

Includes bibliographical references and index.

ISBN 978-0-8031-7556-3 (alkaline paper)

1. Frozen ground--Congresses. 2. Soil mechanics--Congresses. 3. Soils--Testing--Standards--Congresses. I. Zubeck, Hannele K. II. Yang, Zhaohui (Joey) III. ASTM International Committee D18 on Soil and Rock. IV. ASTM International Committee D18 on Soil and Rock. Subcommittee D18.19 on Frozen Soils and Rock.

TA713.M365 2013

624.1'5136--dc23

2013037685

Copyright © 2013 ASTM INTERNATIONAL, West Conshohocken, PA. All rights reserved. This material may not be reproduced or copied, in whole or in part, in any printed, mechanical, electronic, film, or other distribution and storage media, without the written consent of the publisher.

### **Photocopy Rights**

Authorization to photocopy items for internal, personal, or educational classroom use, or the internal, personal, or educational classroom use of specific clients, is granted by ASTM International provided that the appropriate fee is paid to ASTM International, 100 Barr Harbor Drive, P.O. Box C700, West Conshohocken, PA 19428-2959, Tel: 610-832-9634; online: <http://www.astm.org/copyright>.

The Society is not responsible, as a body, for the statements and opinions expressed in this publication. ASTM International does not endorse any products represented in this publication.

### **Peer Review Policy**

Each paper published in this volume was evaluated by two peer reviewers and at least one editor. The authors addressed all of the reviewers' comments to the satisfaction of both the technical editor(s) and the ASTM International Committee on Publications.

The quality of the papers in this publication reflects not only the obvious efforts of the authors and the technical editor(s), but also the work of the peer reviewers. In keeping with long-standing publication practices, ASTM International maintains the anonymity of the peer reviewers. The ASTM International Committee on Publications acknowledges with appreciation their dedication and contribution of time and effort on behalf of ASTM International.

### **Citation of Papers**

When citing papers from this publication, the appropriate citation includes the paper authors, "paper title", STP title and volume, STP number, Paper doi, ASTM International, West Conshohocken, PA, Paper, year listed in the footnote of the paper. A citation is provided as a footnote on page one of each paper.

# Foreword

---

THIS COMPILATION OF *Selected Technical Papers*, STP1568, on *Mechanical Properties of Frozen Soils*, contains peer-reviewed papers that were presented at a symposium held January 31, 2013 in Jacksonville, FL. The symposium was sponsored by ASTM International Committee D18 on Soil and Rock and Subcommittee D18.19 on Frozen Soils and Rock.

The Symposium Co-Chairpersons and STP Co-Editors are Hannele Zubeck and Zhaohui Yang, University of Alaska Anchorage, Anchorage, AK, USA.





# Contents

---

Overview .....	vii
Discussion .....	ix

## **FREEZE-THAW EFFECTS ON MECHANICAL PROPERTIES**

<b>Freeze–Thaw Effects on Stiffness of Unbound Recycled Road Base</b> O. Bozyurt, A. K. Keene, J. M. Tinjum, T. B. Edil, and D. Fratta .....	3
<b>Characteristics of Chicago Blue Clay Subjected to a Freeze–Thaw Cycle</b> C. W. Swan, A. Grant, and A. Kody .....	22
<b>Investigation of Increased Hydraulic Conductivity of Silty Till Subjected to Freeze–Thaw Cycles</b> G. P. Makusa, H. Mattsson, and S. Knutsson .....	33

## **TESTING OF MECHANICAL PROPERTIES**

<b>Sampling, Machining, and Testing of Naturally Frozen Soils</b> B. Still, Z. (Joey) Yang, and X. Ge .....	49
<b>Practice of Testing Frozen Soils</b> F. E. Oestgaard and H. K. Zubeck .....	62
<b>Triaxial Testing of Frozen Soils—State of the Art</b> T. S. Kornfield and H. K. Zubeck .....	76
<b>Experimental Study on Dynamic Properties of Clay Modified by Aught-Set Solidifying Agent Subjected to Freeze-Thaw Cycles</b> J. Liu, J. Zhang, M. Chen, and T. Wang .....	86

## **MECHANICAL PROPERTIES**

<b>Mechanisms Controlling the Initial Stiffness of Frozen Sand</b> G. Da Re, J. T. Germaine, and C. C. Ladd .....	97
<b>Mechanical Properties of Naturally Frozen Ice-Rich Silty Soils</b> X. Ge, Z. (Joey) Yang, and B. Still .....	124
<b>Properties of Elastic Waves in Sand–Silt Mixtures Due to Freezing</b> J.-H. Park, J.-S. Lee, S.-S. Hong, and Y.-S. Kim .....	140
<b>Strength and Creep Properties of a Frozen Coastal Sand in Saltwater</b> S. J. Vitton and M. R. Muszynski .....	153

## **CLASSIFICATION AND EFFECTS OF MECHANICAL PROPERTIES ON PERFORMANCE**

<b>Frozen-Soil Classification with Index Testing</b> B. Still, S. Proskin, H. Zubeck, and Z. Yang .....	169
<b>Investigation of the Dynamic Behaviors of Frozen Saline Silt with the Use of a Spherical Stamp</b> A. Sinitsyn .....	180



## Overview

---

The ASTM International Committee D18.19 has jurisdiction over seven frozen soil standards, and is considering whether more standards are needed; especially in the area of frozen soil mechanical properties. The symposium offered a forum for the exchange of ideas on current research (nationally and internationally) as it relates to testing of mechanical properties of frozen ground; it also provided a rationale for the various details within new standards for testing of frozen soils.

Thirteen selected technical papers (STP) were submitted for publication and presented at the symposium. These papers portray ideas of authors from Canada, China, Norway, South Korea, Sweden and U.S.A. The papers are divided into four topics: Freeze-thaw Effects on Mechanical Properties, Testing of Mechanical Properties, Mechanical Properties, and Classification and Effects of Mechanical Properties on Performance. In addition, the symposium provided a round table meeting where future needs in the area of frozen soil research were proposed and discussed.

The success of the symposium was due to a large group of ASTM personnel including Mary Mikolajewski, ASTM International Manager, Symposia Operations; Hannah Sparks, ASTM International Administrative Assistant, Symposia Operations; Heather Blasco, Editorial Office, and numerous volunteers who devoted many hours in the planning, implementation and execution of the symposium. The volunteers behind the symposium were D18.96 Symposia Chair Joe Richey, and a large number of paper reviewers from the following volunteer groups: D18.19 members, American Society of Civil Engineer's Technical Council on Cold Regions Engineering, TRB AFP50 Seasonal Climatic Effects on Transportation Infrastructure, International Society on Soil Mechanics and Geotechnical Engineering - Technical Committee on Frost, TC 8, and International Permafrost Association's Permafrost Engineering Working Group. Sincere appreciation is extended to the authors, speakers and moderators for their contributions.

Hannele Zubeck and  
Zhaohui Joey Yang





## Discussion

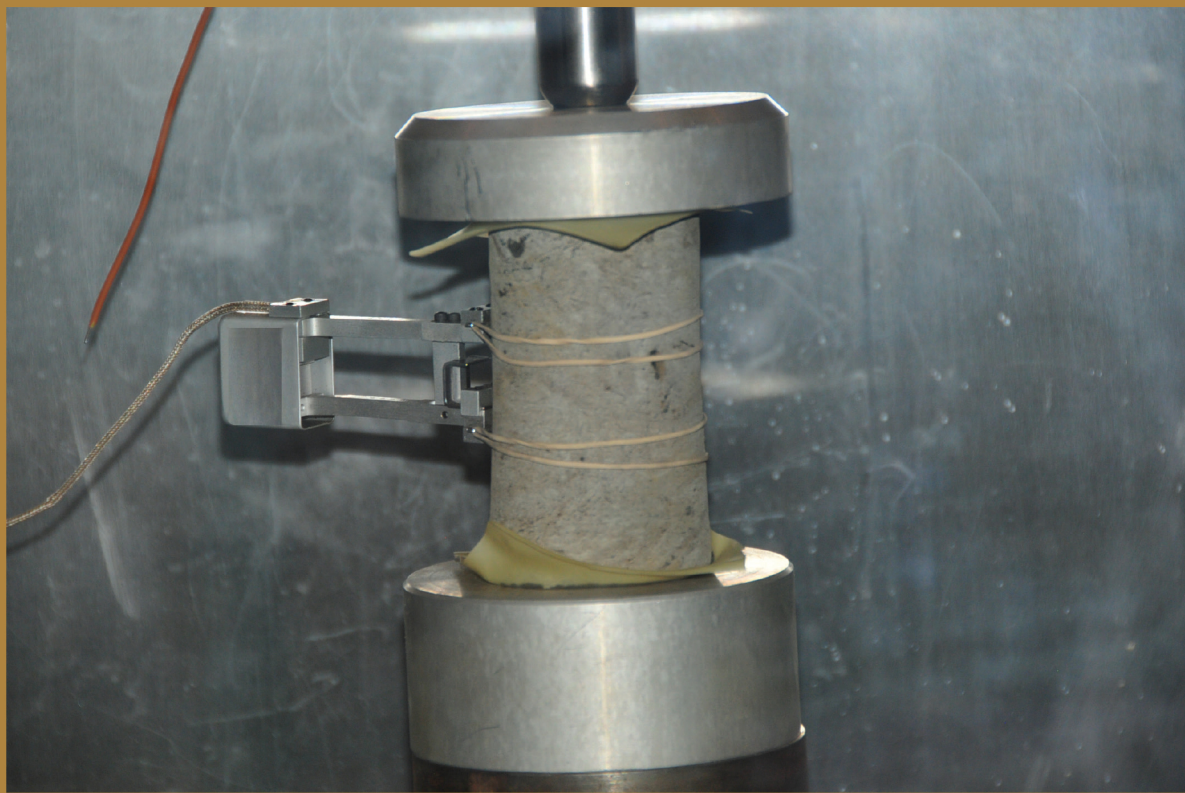
---

Participants of the ASTM International *Symposium on Mechanical Properties of Frozen Soil* discussed two issues during the symposium: the research needs in frozen soil related engineering and frozen soil standard development needs.

One of the pressing problems presented by Chinese researchers is related to the high-speed railway (HSR). In Northeastern China, fine grained soils exist extensively and frost heaving poses a serious threat to the safe operation of newly constructed HSR. In fact, HSR speed has to be reduced from 300 km/h to 200 km/h due to uneven roadbed caused by frost heaving. In Northwestern China, the Qinghai-Tibet railroad was completed in 2005 and has been operating since July 2006. The railroad crosses 630 km of warm permafrost. There are already clear signs (ponds and subsidence of roadbed, etc.) showing degradation of the warm permafrost along the railway. Participants agree that more studies are needed regarding the effectiveness of geophysical methods in detecting permafrost distribution and properties. In addition, participants also felt that engineering practice guidelines are lacking in dealing with warm permafrost and that more research is needed regarding the engineering properties of warm permafrost.

The following standard development needs were listed and the participants recommend that D18.19 considers developing the following standards: Thaw consolidation test, shear stress test, triaxial compression test, unfrozen water content test, segregation potential test, handling-transportation-storage of frozen samples for laboratory testing, and sample preparation for laboratory testing.





Photos Courtesy of:  
Zhaohui Yang  
University of Alaska Anchorage

[www.astm.org](http://www.astm.org)

ISBN: 978-0-8031-7556-3  
Stock #: STP1568