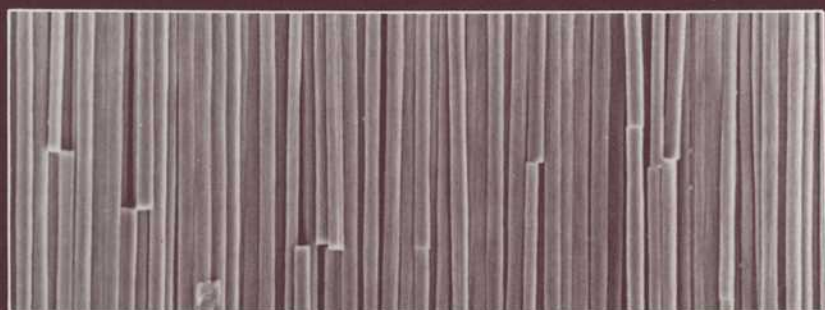


COMPOSITE MATERIALS

◀▶ Fatigue and Fracture ▶◀



H. Thomas Hahn
editor



STP 907

COMPOSITE MATERIALS: FATIGUE AND FRACTURE

A symposium
sponsored by
ASTM Committee D-30
on High Modulus Fibers
and Their Composites
Dallas, TX, 24–25 Oct. 1984

ASTM SPECIAL TECHNICAL PUBLICATION 907
H. Thomas Hahn, Washington University,
editor

ASTM Publication Code Number (PCN)
04-907000-33



1916 Race Street, Philadelphia, PA 19103

Library of Congress Cataloging-in-Publication Data

Composite materials.

(ASTM special technical publication; 907)

“ASTM publication code number (PCN) 04-907000-33.”

Includes bibliographies and index.

1. Composite materials—Fatigue—Congresses. 2. Composite materials—Fracture—Congresses. I. Hahn, H. Thomas. II. ASTM Committee D-30 on High Modulus Fibers and Their Composites. III. Series.

TA418.9.C6C57 1986 620.1'183 86-3509

ISBN 0-8031-0470-7

Copyright© by AMERICAN SOCIETY FOR TESTING AND MATERIALS 1986
Library of Congress Catalog Card Number: 86-3509

NOTE

The Society is not responsible, as a body,
for the statements and opinions
advanced in this publication.

Foreword

The symposium on Composite Materials: Fatigue and Fracture was held in Dallas, Texas, 24–25 October 1984. ASTM Committee D-30 on High Modulus Fibers and Their Composites sponsored the symposium. H. Thomas Hahn, Washington University, presided as symposium chairman and editor of this publication.

Related ASTM Publications

Effects of Defects in Composite Materials, STP 836 (1984), 04-836000-33

Long Term Behavior of Composites, STP 813 (1983), 04-813000-33

Composites for Extreme Environments, STP 768 (1982), 04-768000-33

Nondestructive Evaluation and Flaw Criticality for Composite Materials, STP 696 (1979), 04-696000-33

Advanced Composite Materials—Environmental Effects, STP 658 (1978), 04-658000-33

A Note of Appreciation to Reviewers

The quality of the papers that appear in this publication reflects not only the obvious efforts of the authors but also the unheralded, though essential, work of the reviewers. On behalf of ASTM we acknowledge with appreciation their dedication to high professional standards and their sacrifice of time and effort.

ASTM Committee on Publications

ASTM Editorial Staff

Helen M. Hoersch
Janet R. Schroeder
Kathleen A. Greene
Bill Benzing

Contents

Introduction	1
---------------------	----------

FRACTURE

Dynamic Delamination Crack Propagation in a Graphite/Epoxy Laminate—JOSEPH E. GRADY AND C. T. SUN	5
Influence of Mold Coverage upon the Notch Strength of R25 Sheet Molding Compounds—C. DAVID SHIRRELL AND MARY G. ONACHUK	32
Interface Studies of Aluminum Metal Matrix Composites—L.-J. FU, M. SCHMERLING, AND H. L. MARCUS	51
Probabilistic Fracture Kinetics of “Natural” Composites—A. S. KRAUSZ, K. KRAUSZ, AND D. S. NECSULESCU	73
Constrained 90-Deg Ply Cracking in 0/90/0 and \mp 45/90 \pm 45 CFRP Laminates—P. W. M. PETERS	84
Fracture of Thick Graphite/Epoxy Laminates with Part-Through Surface Flaws—CHARLES E. HARRIS AND DON H. MORRIS	100
Failure Analysis of a Graphite/Epoxy Laminate Subjected to Bolt-Bearing Loads—J. H. CREWS, JR., AND R. V. A. NAIK	115
Damage Mechanics Analysis of Matrix Effects in Notched Laminates—CARL-GUSTAF ARONSSON AND JAN BÄCKLUND	134
Discussion	156

FATIGUE

Fatigue Behavior of Continuous-Fiber Silicon Carbide/Aluminum Composites—W. S. JOHNSON AND R. R. WALLIS	161
Delamination Arresters—An Adhesive Inner Layer in Laminated Composites—WEN S. CHAN	176

Fatigue Damage in Notched Pultruded Composite Rods— P. K. MALLICK, R. E. LITTLE, AND J. THOMAS	197
Fatigue Failure Mechanisms in Unidirectional Composites— LUIS LORENZO AND H. THOMAS HAHN	210
Internal Load Distribution Effects During Fatigue Loading of Composite Laminates— ALTON L. HIGHSMITH AND KENNETH L. REIFSNIDER	233
On the Interrelationship Between Fiber Fracture and Ply Cracking in Graphite/Epoxy Laminates— RUSSELL D. JAMISON	252
Damage Mechanisms and Accumulation in Graphite/Epoxy Laminates— ALAIN CHAREWICZ AND ISAAC M. DANIEL	274
A Critical-Element Model of the Residual Strength and Life of Fatigue-Loaded Composite Coupons— KENNETH L. REIFSNIDER AND W. W. STINCHCOMB	298
Response of Thick, Notched Laminates Subjected to Tension- Compression Cyclic Loads— CHARLES E. BAKIS AND WAYNE W. STINCHCOMB	314
Effect of Ply Thickness on Longitudinal Splitting and Delamination in Graphite/Epoxy Under Compressive Cyclic Load— PAUL A. LAGACE AND STEPHEN C. NOLET	335
Influence of Sublaminar Cracks on the Tension Fatigue Behavior of a Graphite/Epoxy Laminate— LEIF CARLSSON, CURT EIDEFELDT, AND TOMMY MOHLIN	361
SUMMARY	
Summary	385
Author Index	389
Subject Index	391

ISBN 0-8031-0470-7