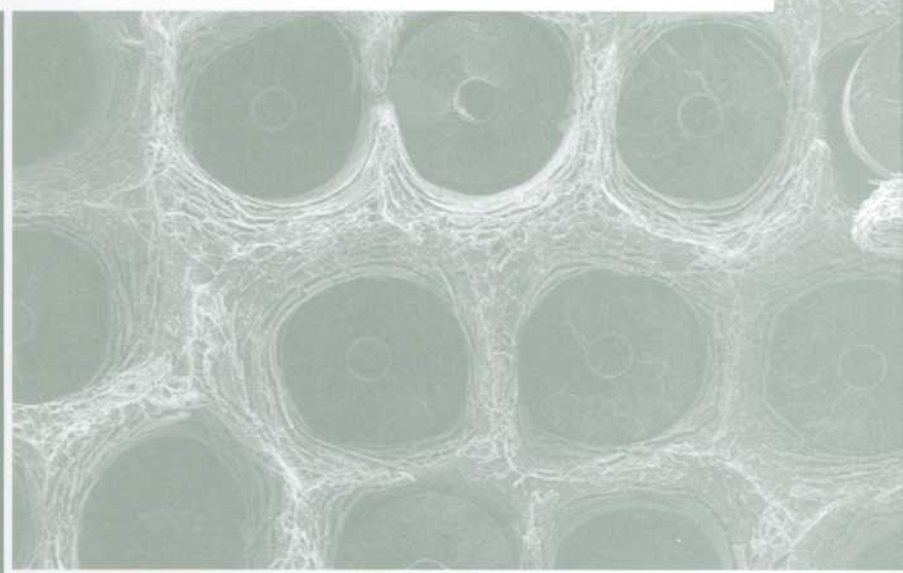


COMPOSITE MATERIALS

Fatigue and Fracture



S I X T H V O L U M E

ERIAN A. ARMANIOS, EDITOR

STP 1285



STP 1285

Composite Materials: Fatigue and Fracture (Sixth Volume)

Erian A. Armanios, editor

ASTM Publication Code Number (PCN):
04-012850-33



ASTM
100 Barr Harbor Drive
West Conshohocken, PA 19428-2959

Printed in the U.S.A.

ISBN: 0-8031-2411-2

ISSN: 1040-3086

Copyright © 1997 AMERICAN SOCIETY FOR TESTING AND MATERIALS, West Conshohocken, PA. All rights reserved. This material may not be reproduced or copied, in whole or in part, in any printed, mechanical, electronic, film, or other distribution and storage media, without the written consent of the publisher.

Photocopy Rights

Authorization to photocopy items for internal, personal, or educational classroom use, or the internal, personal, or educational classroom use of specific clients, is granted by the American Society for Testing and Materials (ASTM) provided that the appropriate fee is paid to the Copyright Clearance Center, 222 Rosewood Drive, Danvers, MA 01923; Tel: 508-750-8400; online: <http://www.copyright.com/>.

Peer Review Policy

Each paper published in this volume was evaluated by three peer reviewers. The authors addressed all of the reviewers' comments to the satisfaction of both the technical editor(s) and the ASTM Committee on Publications.

The quality of the papers in this publication reflects not only the obvious efforts of the authors and the technical editor(s), but also the work of these peer reviewers. The ASTM Committee on Publications acknowledges with appreciation their dedication and contribution of time and effort on behalf of ASTM.

Printed in Ann Arbor, MI
June 1997

Foreword

The Sixth Symposium on Composites: Fatigue and Fracture was held 16–18 May 1995 in Denver, Colorado. ASTM Committee D30 on High Modulus Fibers and Their Composites sponsored the symposium. Erian A. Armanios, Georgia Institute of Technology, presided as symposium chairman and is editor of this publication.

Contents

Overview	1
 DAMAGE TOLERANCE AND FRACTURE ANALYSIS	
Damage Tolerance of Pressurized Graphite/Epoxy Cylinders Under Uniaxial and Biaxial Loading—P. A. LAGACE AND S. M. PRIEST	9
Failure of a Titanium Metal-Matrix Composite Cylindrical Shell Under Internal Pressure—D. A. HOOKE, E. A. ARMANIOS, D. S. DANCILA, A. THAKKER, AND P. DOORBAR	27
Experimental Design Methods for Assessment of Composite Damage in Recreational Structures—T. SACZALSKI, B. LUCHT, AND K. SACZALSKI	45
Progressive Fracture in Composite Structures—C. C. CHAMIS, P. L. N. MURTHY, AND L. MINNETYAN	70
Determination of Transverse Shear Strength Through Torsion Testing—K. T. MARCUCELLI AND J. C. FISH	85
 FATIGUE AND LIFE PREDICTION	
Effects of Fiber Bridging and Fiber Fracture on Fatigue Cracking in a Titanium-Matrix Composite—D. J. HERRMANN AND B. M. HILLBERRY	103
Stress-Ratio Effect on Mode II Propagation of Interlaminar Fatigue Cracks in Graphite/Epoxy Composites—K. TANAKA AND H. TANAKA	126
The Fatigue Growth of Internal Delaminations Under Compressive Loading of Cross-Ply Composite Plates—A. A. PELEGRI, G. A. KARDOMATEAS, AND B. U. MALIK	143
Prediction of Delamination Growth Under Cyclic Loading—R. KRÜGER AND M. KÖNIG	162
A Strength-Based Wearout Model for Predicting the Life of Composite Structures—J. R. SCHAFF AND B. D. DAVIDSON	179
 STRENGTH AND RESIDUAL PROPERTIES	
On the Determination of Tensile and Compressive Strengths of Unidirectional Fiber Composites—S. N. CHATTERJEE, C.-F. YEN, AND D. W. OPLINGER	203

The Influence of Transverse Bearing Loads Upon the Bypass Strength of Composite Bolted Joints—A. J. SAWICKI AND N. NGUYEN	225
Residual Strength of Metal-Matrix Laminated Panels—M. WU AND D. WILSON	244
Impact Damage Resistance and Residual Property Assessment of $[0/\pm 45/90]_S$ SCS-6/TIMETAL 21S—J. L. MILLER, M. A. PORTANOVA, AND W. S. JOHNSON	260

MODE MIXITY AND DELAMINATION

The Relationship Between Critical Strain Energy Release Rate and Fracture Mode in Multidirectional Carbon-Fiber/Epoxy Laminates—K. TRAKAS AND M. T. KORTSCHOT	283
Experimental Compliance Calibration for the Mixed-Mode Bending (MMB) Specimen—R. H. MARTIN AND P. L. HANSEN	305
Separation of Crack Extension Modes in Composite Delamination Problems—J. L. BEUTH AND S. H. NARAYAN	324
Fracture Analysis of Internally Delaminated Unsymmetric Laminated Composite Plates—D. W. PALMER, E. A. ARMANIOS, AND D. A. HOOKE	343
Modeling Crack Extension in Chopped-Fiber Composites—E. A. FRIIS, D. L. HAHN, F. W. COOKE, AND S. J. HOOPER	364

ENVIRONMENTAL EFFECTS

Hygrothermal Influence on the Free-Edge Delamination of Composites Under Compressive Loading—A. S. CRASTO AND R. Y. KIM	381
Environmental Effects on the Isothermal and Thermomechanical Fatigue of SCS-6/TIMETAL 21S Unidirectional Composites—A. H. ROSENBERGER AND T. NICHOLAS	394
Analysis of the Hygrothermal Effects and Parametric Study on the Edge Crack Torsion (ECT) Mode III Test Layups—J. LI AND T. K. O'BRIEN	409
Influence of Environmental and Geometric Parameters on the Behavior of Fastener Joints in Advanced Composites—B. K. PARIDA, R. V. PRAKASH, P. D. MANGALGIRI, AND K. VIYAYARAJU	432
Creep Elongation of Bolt Holes Subjected to Bearing Loads in a Polymer Matrix Composite Laminate—R. A. KALLMEYER AND R. I. STEPHENS	452

TESTING AND FAILURE MECHANISMS

Failure Mechanisms of Woven Carbon and Glass Composites—N. ALIF AND L. A. CARLSSON	471
Evaluation of Damage Evolution and Material Behavior in a Sigma/Ti-6242 Composite Using Nondestructive Methods—D. BENSON, P. KARPUR, D. STUBBS, AND T. MATIKAS	494

Static and Fatigue Interlaminar Tensile Characterization of Laminated Composites— K. L. KOUDELA, L. H. STRAIT, A. A. CAIAZZO, AND K. L. GIPPLE	516
The Compact Tension, C(T), Specimen in Laminated Composite Testing— L. MINNETYAN AND C. C. CHAMIS	531
Design and Testing of Z-Shaped Stringer-Stiffened Compression Panels— Evaluation of ARALL, GLARE, and 2090 Materials—M. WU, S. V. REDDY, AND D. WILSON	551
Author Index	565
Subject Index	567

ISBN 0-8031-2411-2