

## TESTING FORUM

### Committee D-18 News

A recent ballot of ASTM Committee D-18 membership approved the addition of a third vice-chairman, which had been recommended in the long-range plans developed by the Task Group on D-18 for the 1980s. Committee D-18 Chairman Ivan Johnson filled this newly created position by appointing W. G. "Woodie" Shockley, Consulting Engineer, 326 Lake Hill Drive, Vicksburg, Miss. 39180. Woodie is extremely well qualified for the job having had many years of responsible positions not only in ASTM, but also in the U.S. Army Corps of Engineers Waterways Experiment Station.

As third vice-chairman, Woodie inherits the following duties, as designated in the newly approved D-18 bylaws: "The third vice-chairman shall assist the chairman in the management control of new standards activity, including but not limited to: the identification of need, recruitment of task groups, identification of funding sources, liaison with other ASTM Committees and D-18 Subcommittees, and monitoring funding and progress. The third vice-chairman shall also serve as chairman of the Research and Standards Development Subcommittee."

### Call for Papers

A call for papers is issued for the symposium "The Testing of Peats and Organic Soils" to be held on 23 June 1982 in Toronto, Ontario, Canada. The symposium is cosponsored by ASTM Committee D-18 and the Peatlands Subcommittee of the Associate Committee on Geotechnical Research of the National Research Council of Canada.

The symposium will provide a forum for the presentation and discussion of testing methods by which the properties of peats may be characterized for use within the following spheres of interest: energy production—calorific values, chemical analysis, ash contents, and physical properties; geotechnical engineering—shear strength, consolidation, and trafficability; and silviculture, agriculture, and horticulture—water holding capacity and chemical

analysis. Papers describing previously unpublished studies on these and other relevant subjects are invited. In addition, offers to prepare concise state-of-the-art papers encompassing testing in one of the three major fields outlined or on one of the following topics will be considered: the sampling and delineation of peat deposits and the classification of peats.

A special technical publication (STP) arising from the symposium proceedings is anticipated by ASTM.

Prospective authors are requested to submit a 300 to 500 word abstract and the ASTM Paper Submittal Form by 1 November 1981 to Kathy Greene, ASTM Publications Division, 1916 Race St., Philadelphia, Pa. 19103 (215/299-5414). Forms are available from Kathy Greene.

### ASFE Presentation

The Association of Soil and Foundation Engineers (ASFE) a nonprofit association of some 180 consulting geotechnical engineering firms responsible for an estimated 80% of the soil and foundation engineering work contracted for annually in the United States, has developed a new video tape program titled, "An Introduction to ASFE and Professional Liability Loss Prevention." It is a 49-min presentation designed to make geotechnical engineers more aware of effective loss prevention activities and programs.

The program was developed primarily for showing to staff personnel who are not familiar with loss prevention practices. The program is divided into three parts, each approximately 15 min in length. The first part uses numerous visual and oral presentations to discuss ASFE, its history, benefits of membership, and the association's future direction. The second part of the program concentrates on several professional liability problems. Among the topics discussed are client selection, fee arrangements, and communications. Members' comments are used as well as dramatizations. The measures recommended are categorized as "quick fix" solutions to certain liability problems. The third part of the program examines four of ASFE's most beneficial and important programs: report review, the Institute of Professional Practice, the Council of Fellows, and peer review.

The ASFE report review program involves mutual review of soils reports and other items by members. The Institute of Professional Practice (IPP) is designed to provide middle management with background and information on various aspects of engineering professionalism. The program involves twelve weeks of home study, a comprehensive seminar entrance examination, an in-depth study of an assigned topic, and a two and one-half day seminar. ASFE recognizes senior members of the association for their distinguished ability to continue to serve the profession through the Council of Fellows. The Council is concerned with professional development, conflict resolution, and other matters. The peer review program involves a comprehensive review of a firm's overall performance by a team of reviewers. Numerous documents and records are examined before an on-site visitation.

"An Introduction to ASFE and Professional Liability Loss Prevention" is available on VHS or Beta format at a cost of \$150 from ASFE, 8811 Colesville Road, Suite 225, Silver Spring, Md. 20910. Orders should indicate Beta or VHS format.



New Committee D-18 third vice-chairman, W. G. "Woodie" Shockley.

---

# TESTING FORUM

---

## Directory

A new *Directory of Publications and Loss Prevention Aids* is available without charge from the Association of Soil and Foundation Engineers (ASFE). The directory describes more than 35 books, manuals, pamphlets, video and audio tape programs, and other materials for in-house use by consulting engineering firms and other design professional organizations interested in improving their business practices and reducing exposure to professional liability.

Copies of ASFE's *Directory of Publications and Loss Prevention Aids* may be obtained by writing on company letterhead to ASFE, 8811 Colesville Road, Suite 225, Silver Spring, Md. 20910.

## Symposium on Ground-Water Geophysics

San Francisco will be the site for a "Symposium on Geophysics and Ground-Water—Methods, Applications, Problems" during the week 7–11 Dec. 1981. Arranged as part of the Fall Annual Meeting of the American Geophysical Union (AGU), the symposium is sponsored by the Committee on Ground Water of the AGU Section of Hydrology.

Consisting of invited and offered papers, the symposium will have two half-day papers sessions with one session emphasizing surface geophysical methods and the other session emphasizing subsurface geophysical methods. The program will focus on new methods or applications and limitations or problems related to geophysics as applied to solution of ground-water problems. Speakers will be allowed approximately 20 min for their oral presentation.

Abstracts of papers are due by 7 Sept. 1981 for selection screening by the Ground-Water Committee. Authors must be members of AGU, sponsored by a member, or have their abstract accompanied by a membership application. Abstracts must be submitted in special AGU abstract format, instructions for which will be spent upon request.

Anyone interested in offering a paper should submit the abstract to A. I. Johnson, Ground-Water Symposium Chairman, Woodward-Clyde Consultants, 2909 W. 7th Ave., Denver, Colo. 80204 (303/573-7882).

## Symposium on Numerical Models in Geomechanics

An international symposium on "Numerical Models in Geomechanics" will be held at the Federal Institute of Technology, Zurich, Switzerland from 13–17 Sept. 1982. The symposium will provide a forum for discussion and exchange of views between researchers and practicing engineers. Special emphasis will be given to the verification and evaluation of models for practical applications such as embankment dams, off-shore structures, and foundations. Monotonic, cyclic, and random loading conditions will be discussed. The organizers also intend to use standard laboratory test results to verify and evaluate a number of well-known models.

Abstracts of papers, not exceeding 500 words, are invited and

should be submitted before 31 Dec. 1981. All papers will be published in the symposium proceedings. The symposium is supported by leading internationally recognized experts and will be of interest to experimental workers, researchers engaged in the formulation and evaluation of appropriate numerical models, and practicing engineers who wish to adopt a suitable model for the solution to their particular problem (to be used, for example, in finite element codes).

For information write to Dr. R. Dungar, c/o Motor-Columbus, Parkstrasse 27, Baden, Switzerland.

## Conference

During 5–7 Oct. 1981 the Rock Mechanics Laboratory of the Department of Mineral Engineering at The Pennsylvania State University will sponsor a special conference on Acoustic Emission/Microseismic Activity in Geologic Structures and Materials. The objective of the conference is to bring together the expertise of various workers involved in the development and application of acoustic emission/microseismic techniques in the geomechanics area. The first and second conferences on this subject were held at Penn State in 1975 and 1978; this third conference will provide an opportunity to continue critical evaluation of various aspects of the subject and to review recent developments in a rapidly expanding field.

Some 30 engineers and scientists from several European countries, Australia, South Africa, Canada, and the United States have been invited to take part in this conference. Space is still available for a limited number of additional participants, however, participation is restricted to persons who are actively involved in the field.

The conference will consider the application of acoustic emission/microseismic techniques to a wide range of field and laboratory problems in the general geomechanics area. These will include stability evaluation of underground gas storage reservoirs, solution-mined caverns, earth-filled dams and tunnels, strata control in coal and hardrock mines, earthquake mechanics, and fundamental behavior of geologic materials.

Cochairmen for the conference are Dr. H. Reginald Hardy, Jr., director of the Penn State Rock Mechanics Laboratory and Mr. Frederick W. Leighton, U.S. Bureau of Mines, Mining Research Center, Denver. The papers presented at the conference and the discussions associated with them will be published early in 1982. Proceedings of the first and second conferences are available from Trans Tech Publications, Clausthal-Zellerfeld, West Germany.

For further information, please contact Dr. H. Reginald Hardy, Jr., Rock Mechanics Laboratory, Room 117 Mineral Sciences Building, The Pennsylvania State University, University Park, Pa. 16802 (814/863-1620/865-3437).

## Erratum

In the book review of *Construction and Geotechnical Engineering Using Synthetic Fabrics* on p. 172 of the December 1980 issue of the *Geotechnical Testing Journal*, the authors' names were incorrect. Their names should read Koerner, R. M. and Welch, J. P., not Welch, R. M. and Welch, J. P.

# American Society for Testing and Materials

## Committee D-18 on Soil and Rock

### Information Form for Applicants for Technical Committee Membership

1. Full Name \_\_\_\_\_ Position \_\_\_\_\_  
 Organization \_\_\_\_\_  
 \*Street Address \_\_\_\_\_  
 City, State, Zip \_\_\_\_\_ Phone \_\_\_\_/\_\_\_\_/\_\_\_\_  
 (Area Code) \_\_\_\_\_  
 ( ) \*Check here if this is applicant's home address
  2. Requested classification: ( ) Producer ( ) User ( ) General Interest
  3. Society membership status:  
 ( ) Member (membership No. \_\_\_\_\_)  
 ( ) Membership applied for
  4. If you are liaison representative from another society of ASTM Committee, please designate: \_\_\_\_\_
  5. Major product of, or service performed by, your organization: \_\_\_\_\_  
 \_\_\_\_\_  
 \_\_\_\_\_  
 How long has company been active in this field? \_\_\_\_\_  
 How long have you been active? \_\_\_\_\_
  6. Technical interests: \_\_\_\_\_
  7. Qualifications (education and experience): \_\_\_\_\_  
 \_\_\_\_\_  
 \_\_\_\_\_
  8. What laboratory facilities, if any, do you have available for cooperative committee activity? \_\_\_\_\_  
 How much time could you devote to specific research or cooperative assignments? \_\_\_\_\_  
 \_\_\_\_\_  
 \_\_\_\_\_
  9. Are you participating in technical committee work of other professional or technical organizations and, if so, what are the organizations and what is the extent of your participation? \_\_\_\_\_  
 \_\_\_\_\_  
 \_\_\_\_\_
  10. Please list by number in order of preference not more than three subcommittees or sections in which you have an interest and for which you would be willing to contribute additional time and effort toward their "Standards" activities (see list on front).  
 (1) \_\_\_\_\_ (2) \_\_\_\_\_ (3) \_\_\_\_\_
- Applicant's Signature \_\_\_\_\_ Date \_\_\_\_\_

## Application for 1981 ASTM Membership

Application is made for a membership in the American Society for Testing and Materials.

- ☐ **Organizational** an individual, business, governmental, research or professional organization, or trade association, or separate facility thereof subscribing to the purposes of the Society provided in the Charter and Bylaws.
- ☐ **Member** an individual or an institution (educational, public library, or a scientific engineering, or technical non-profit society) subscribing to the purposes of the Society provided in the Charter and Bylaws.

## Benefits and Fees for 1981

	<b>Organizational</b>	<b>Member</b>
Annual fee <sup>1</sup> .....	\$350.00 min.	\$50.00
Participation on ASTM Technical Committees .....	Official Rep. <sup>2</sup>	See #4 below
Annual Book of ASTM Standards:		
Free part .....	One	One
Parts at 20% discount <sup>3</sup> .....	47	5
Price of complete set (Parts 1-48)		
including free part .....	\$1,350.00 <sup>5</sup>	\$1,635.00 <sup>5</sup>
Annual subscriptions to:		
Standardization News .....	1 free	1 free
Other publications (other than the Book of Standards) at 20% discount .....		
	No limit	No limit

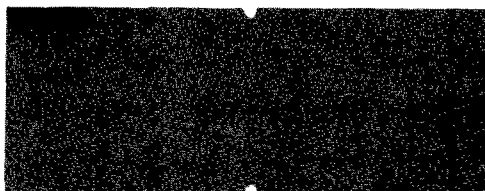
- 1) Membership year is 1 January to 31 December. Fees are payable in advance and are not pro-rated. Election to membership will become effective upon payment of fees.
- 2) Organizations applying for membership should select an official representative qualified to exercise the rights and privileges of membership. This includes voting on Society Ballot, and if appropriate, on technical committee matters. The official representative for the membership may be changed as needed by notifying the ASTM Headquarters. Committee participation is not transferable. Application will have to be submitted by the new representative to the appropriate committees. A member not officially serving on ASTM committees may not vote in committee matters.
- 3) Discount available only when order is placed on the Order/Invoice form furnished at the time of fee billing and only after the fee has been paid. Quantity prices available on request. All publications will be shipped to the address of membership.
- 4) For members serving on technical committees, their organizations may ask for this membership to be transferred without payment of additional fees. However, no additional free part or discount for the Book of ASTM Standards will be allowed. Committee participation is not transferable. Application will have to be submitted by the new member to the appropriate committee.
- 5) Prices are net with *all* allowable discount and provision for *free* part deducted.

NOTE: Membership benefits and publication's prices are subject to change.

# MOVING?

To insure uninterrupted service on your *GTJ* subscription, please notify us at least six weeks before you move.

1. Attach your address label from a recent issue in the space provided opposite. (If label is not available, be sure to give your old address, including Zip Code.)



2. Print your name, membership no., and address below. (Be sure to include Zip Code.)

3. Mail entire notice to: **ASTM**  
***Geotechnical Testing Journal***  
**P.O. Box 64106**  
**Baltimore, Md. 21264**

Name \_\_\_\_\_ Membership No. \_\_\_\_\_

New Address \_\_\_\_\_

City \_\_\_\_\_ State \_\_\_\_\_ Zip Code \_\_\_\_\_

*(please print or type the above information)*