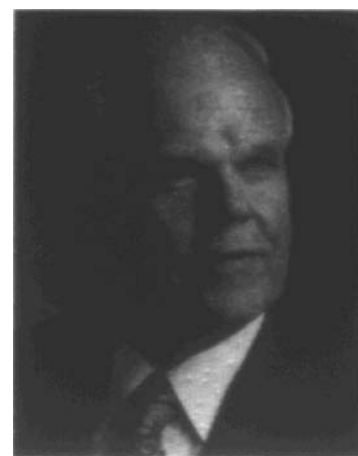


Alan Wolfenden

Editorial

The Changing of the Guard



Donald R. Petersen

Alan Wolfenden—It is six years since I became the first Technical Editor of the *Journal of Testing and Evaluation* (JOTE). Now with the May 1992 issue we have the changing of the guard as Donald Petersen becomes the new Technical Editor. Dr. Petersen is a technical consultant with Greenleaf Associates in Midland, MI, and is a Fellow of the American Institute of Chemists. As a founding member of the Editorial Board of JOTE, Don has been a mainstay in helping me to guide the policies and operations of the Journal. He has a wide knowledge of science and engineering. I have every confidence that he will perform the duties as Editor with skill and thoroughness.

The six years of my tenure as Editor have flown past. Truly it is a case of *tempus fugit*. As is typical with so many of us when we undertake an onerous task, I was full of grand ideas—some practical and some rather far-fetched—for the improvement of the quality of the Journal. Let me point out that without the backup of the ASTM staff and the Editorial Board Members no progress would have been made. It has given me tremendous inspiration to work with such a group of people from a wide range of backgrounds, and I am very grateful to them. If I mention some names in showing my appreciation, it is to be noted that the list is not exhaustive and any omissions are a fault of my memory. The enthusiastic staff members of ASTM are a pleasure to work with. I have enjoyed interactions with Kathy Dernoga, Janet Schroeder, and Susan Gebremedhin in their managerial positions; with Bette Grugan and Barbara Stafford in their tireless day-to-day duties tracking the incoming manuscripts, the assigning of reviewers, the pestering of late reviewers, and other tasks; with Allan Kleinberg in his deft editing of galley proofs and juggling of deadlines for publication; with Phil Lively for his experience in market surveys of readers and potential readers of the Journal; and with several members of the ASTM Committee on Publications, including Messrs. Perrin and Mordfin.

The Members of the Editorial Board have provided me with valuable ideas and suggestions for the improvement of the Journal. With a multidisciplinary Journal, it has been essential to draw on the expertise of colleagues from a wide variety of dis-

ciplines. Indeed, the Members represent chemists, physicists, statisticians, managers, and engineers of all kinds. In keeping with the international flavor of the Journal, the Board Members hail from several countries around the world. Many of the Members have devoted considerable time and expense to perform their duties and to come to the semi-annual meetings of the Board, usually held at ASTM Headquarters. Several Members operated by correspondence because of the long distances involved. I thank all the Members of the Editorial Board for their help and patience.

Some of the obvious changes in JOTE are readily apparent. For example, the color of the cover has been changed (drastically) and the format of the cover has been altered (slightly). In addition to the regular papers published in the Journal, there has been an effort to increase the number of Technical Notes, Discussions, and Book Reviews. Although the majority of papers on testing and evaluation have focussed on mechanical properties, we have seen a broadening of the spectrum to include papers on medical, biological, and statistical topics. These papers which add diversity to the content of the JOTE have been particularly welcome.

The continued success of JOTE has been due in large part to the many contributors of manuscripts from around the world. The steady stream of incoming papers has received prompt attention from the ASTM staff, from me, and from our anonymous reviewers. We have strived to keep the turn-around time (date of receipt to date of publication) to 9 months. Most of the reviewers have been prompt, and their efforts are much appreciated; some reviewers needed prodding and their efforts, amid heavy work loads, are also recognized. A certain percentage of the contributors experienced the somewhat harsh scrutiny of our reviewing system and have not been deterred from subsequent contributions to the Journal.

After six years as Editor, I feel that a change in leadership for JOTE has many advantages. My stamina and creativity have been tested, and may be reaching the point of diminishing returns. I intend to continue my affiliation with the Journal by being an Editorial Board Member. Don Petersen has my best wishes,

confidence, and support for the continued success of the *Journal of Testing and Evaluation*.

Donald R. Petersen—I know I have taken on a challenging task in assuming the technical editorship of the *Journal of Testing and Evaluation*. Fortunately, JOTE has an energetic Editorial Board in place to guide its policies and a capable and experienced team at ASTM headquarters to assist in its publication.

There is a listing of the editorial objectives of JOTE on the title page, and I commend them to your attention. One is the stimulation of new ideas in the fields of testing and evaluation, and as Editor I would hope to emphasize this particularly.

While JOTE is a "multidisciplinary forum for applied sciences

and engineering," too few of our hundred and thirty-odd technical committees contribute their work for publication. Our breadth of coverage must be expanded, and I will strive for this during my editorship.

Alan Wolfenden has served as a remarkably able Technical Editor during his tenure. We thank him and congratulate him on his exemplary service.

I look forward to working with the members of the Editorial Board, with the ASTM professional staff, and with you, our readers and authors, in maintaining the high level of the *Journal of Testing and Evaluation*.